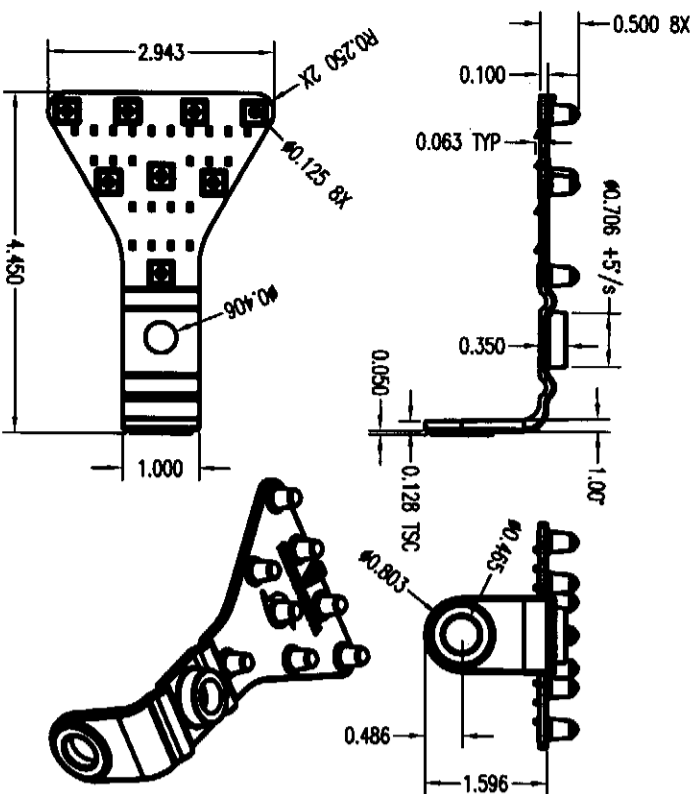
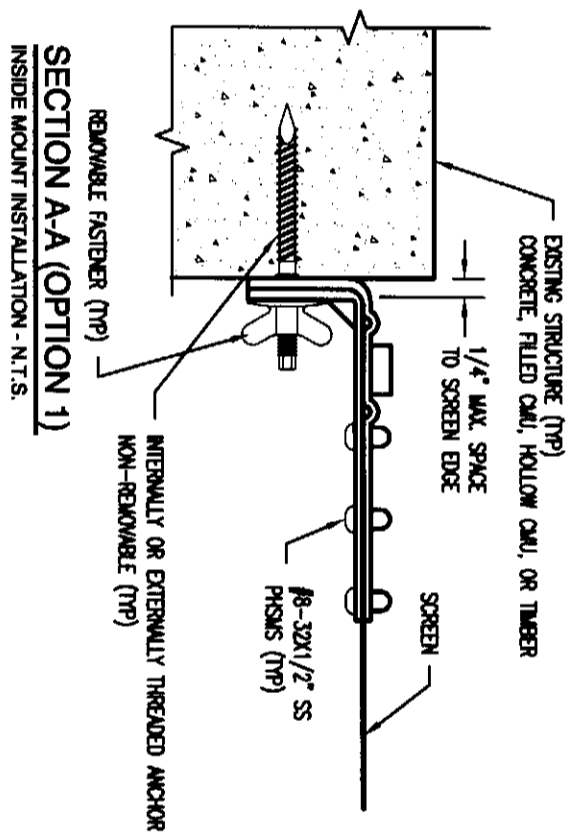


TYPICAL TWO-SIDED INSTALLATION
VERTICAL OR HORIZONTAL INSTALLATION - N.T.S.

NOTE:
PANELS CAN BE ATTACHED ON THREE OR FOUR SIDES.
FOR FOUR SIDE ATTACHMENT THE SPAN IS IN THE SHORT
DIMENSION BETWEEN FASTENERS



BOTTOM MOUNTING CLIP DETAILS
INSIDE OR OUTSIDE MOUNT INSTALLATION - N.T.S.

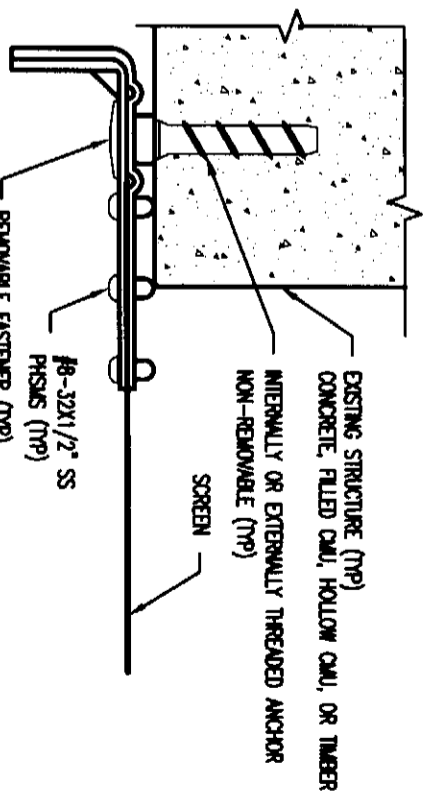


SECTION A-A (OPTION 1)
INSIDE MOUNT INSTALLATION - N.T.S.

LOADS ON EXISTING STRUCTURE FROM SCREEN SYSTEM

PARALLEL LOADS (PLF) $T_x =$

| SCREEN SPAN | 60 | 50 | 40 | 30 |
|-------------|-----|-----|-----|-----|
| 4'-0" | 237 | 210 | 180 | 149 |
| 6'-0" | 310 | 275 | 237 | 195 |
| 8'-0" | 376 | 333 | 287 | 237 |
| 10'-0" | 436 | 387 | 333 | 275 |
| 12'-0" | 493 | 436 | 376 | 310 |
| 14'-8" | 547 | 514 | 442 | 365 |

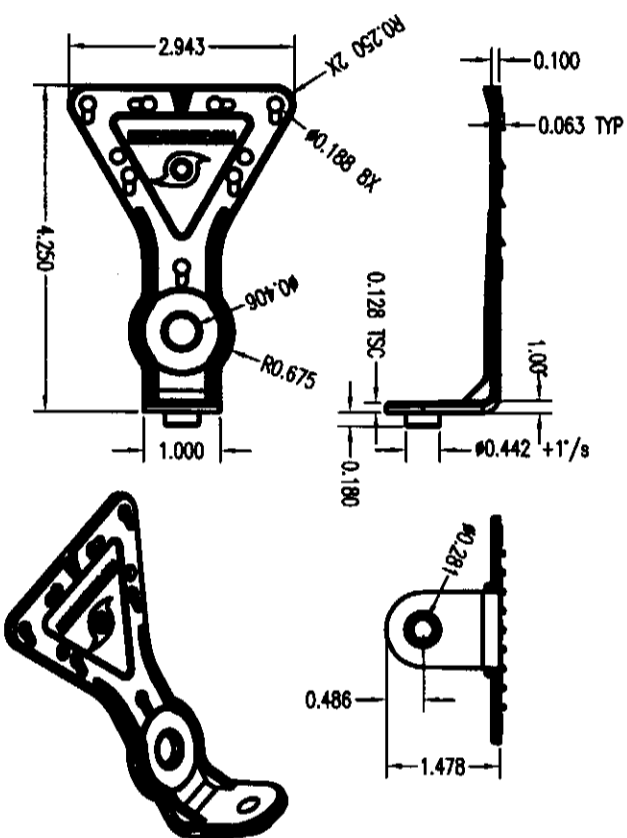


SECTION A-A (OPTION 2)
OUTSIDE MOUNT INSTALLATION - N.T.S.

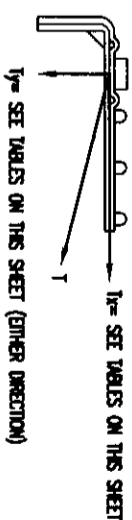
LOADS ON EXISTING STRUCTURE FROM SCREEN SYSTEM

PERPENDICULAR LOADS (PLF) $T_y =$

| SCREEN SPAN | 60 | 50 | 40 | 30 |
|-------------|-----|-----|-----|-----|
| 4'-0" | 120 | 100 | 80 | 60 |
| 6'-0" | 180 | 150 | 120 | 90 |
| 8'-0" | 240 | 200 | 160 | 120 |
| 10'-0" | 300 | 250 | 200 | 150 |
| 12'-0" | 360 | 300 | 240 | 180 |
| 14'-8" | 440 | 367 | 293 | 220 |



TOP MOUNTING CLIP DETAILS
INSIDE OR OUTSIDE MOUNT INSTALLATION - N.T.S.



JOHN H. KEMPSTEIN, JR., PE
FL License # 47518
DATE 5/5/09

FBC (HIGH VELOCITY HURRICANE ZONE)

CA #6782
WWW.MEANDENGINEERS.COM

ASTRO GUARD
Wind Abatement System

HURRICANE FABRIC.COM LLC
PO BOX 90153
CLAYTON, MO 63105
PHONE: (239)699-0099
WWW.HURRICANEFABRIC.COM

| REV. | DESCRIPTION |
|------|----------------------|
| 1 | XX/XX/XX - RESERVED. |

MEAE
ENGINEERS, INC.
5656 Lawton Drive
Sarasota, Florida 34233
(941) 822-3854 CA-8072

Project Name: JK
Date: 05/04/09
2/2